

Connecting CCC to SNOMED CT and LOINC in a Terminology Server

- Clinical Care Classification (CCC) is a nursing terminology that provides the framework for classifying nursing diagnoses, interventions and outcomes.
- The 3M Healthcare Data Dictionary (HDD) is a terminology server that holds multiple standard terminologies. The various concepts, descriptions and codes can be linked in a process called mapping.



Connecting CCC to SNOMED CT and LOINC in a Terminology Server

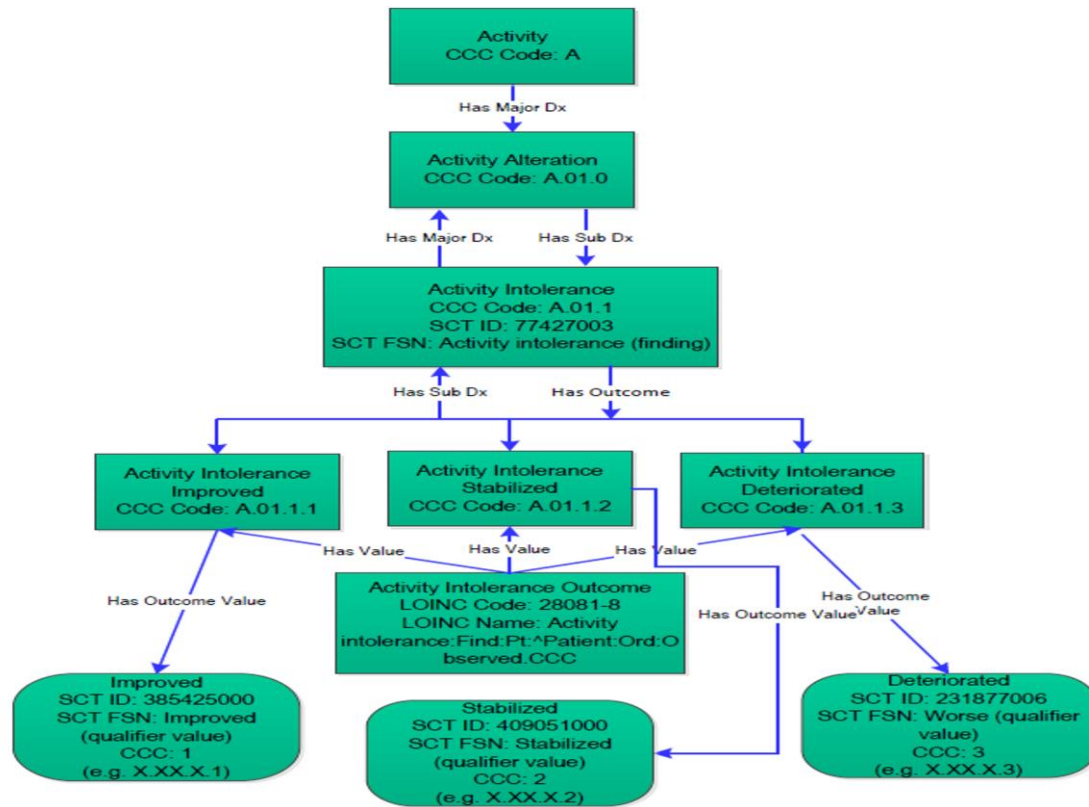
The CCC terminology consists of:

- 21 care components
- 60 major diagnosis
- 116 sub diagnosis
- 3 diagnosis outcomes
- 77 interventions
- 124 sub interventions
- 4 intervention action types

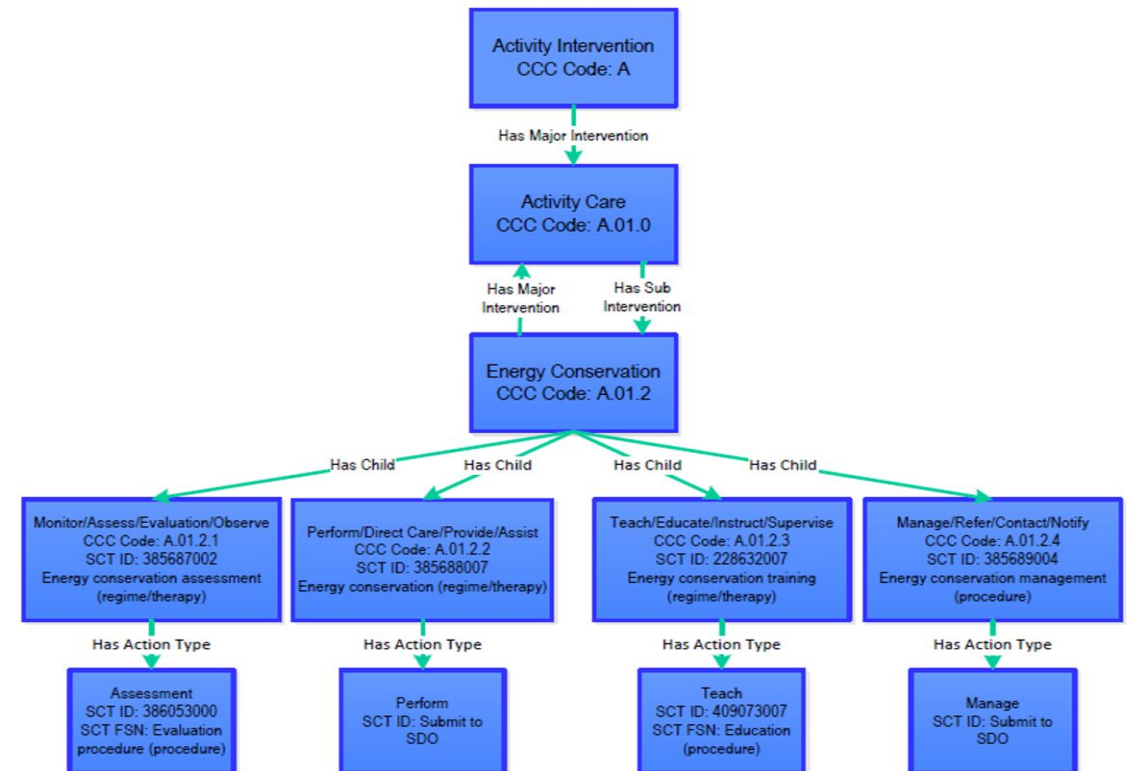


Connecting CCC to SNOMED CT and LOINC in a Terminology Server

Clinical Care Classification Diagnosis



Clinical Care Classification Interventions



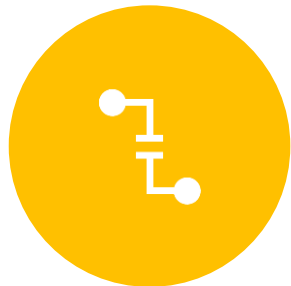
Connecting CCC to SNOMED CT and LOINC in a Terminology Server



Some of the CCC concepts remain to be mapped to SNOMED CT and LOINC to facilitate interoperability.



Mapping to SNOMED CT and LOINC will support national messaging standards.



Housing the CCC terminology within the HDD will facilitate the continued use of CCC in systems and enable interoperability by providing terminology linkage between CCC, LOINC and SNOMED CT.



Continued use and support of standard nursing terminologies will maintain nursing knowledge and support documentation of the nursing process.